

The image shows the interior of a modern bus. The seats are grey with yellow accents. There are yellow handrails and poles throughout the cabin. A SIMONA logo is visible in the top right corner. The bus has large windows and a clean, modern design.

**SIMONA**

## Mass Transit Materials

Fire rated thermoplastics for rail, bus, RV, van,  
heavy-truck and aircraft interior parts

GLOBAL THERMOPLASTIC SOLUTIONS



# Product Offering

## Materials for Interior and Exterior Use

Meet EN 45545, Docket 90 A and NFPA 130 compliance requirements with SIMONA's wide range of materials for demanding mass transit applications.



### Boltaron® 4800

#### Flame-retardant Docket 90 A Compliant Thermoplastic Sheet for Bus Interiors

Boltaron® 4800 sheet, extruded from a proprietary thermoplastic alloy, was formulated specifically for compliance with low smoke and flammability test criteria for aircraft and mass transit interior applications. This aircraft-rated material meets stringent FAR test requirements for low smoke emissions and flammability for interior components. It also satisfies ASTM E162 and ASTM E662 flammability and low smoke emission criteria and FTA, UMTA and Docket 90 A guidelines for passenger rail interiors.

#### Advantages

- Wide range of textures
- High impact strength increases service life
- Resistant to stains and cleaning chemicals
- Behaves consistently lot to lot in thermoforming
- Maintains uniform wall thickness even in deep draws

#### Colors

- Unlimited

#### Configurations

- Sheet size: 120 x 60 in. (3,048 x 1,524 mm)
- Gauges: from 0.040 to 0.250 in. (from 1.02 to 6.35 mm)



### PremierCap® TPO

#### High and Low Gloss Thermoforming Grades with UV, High Impact, Scratch and Weather Resistance

SIMONA PMC's PremierCap® low, mid, and high gloss TPO cap options are next generation cap layers with enhanced performance for a long service life in the field. This product is designed to offer a weatherable cap that provides enhanced scratch and mar resistance over a cost-effective substrate, providing enhanced surface durability with improved economics.

#### Advantages

- Great cold temperature impact resistance
- Chemical resistant
- Low thermal expansion
- UV and weather resistant
- Capable in vibrant colors
- 3 cap options: standard, low or high gloss
- Scratch and mar resistant
- Available with common TPO cores: high flex modulus, high melt strength and economy grades

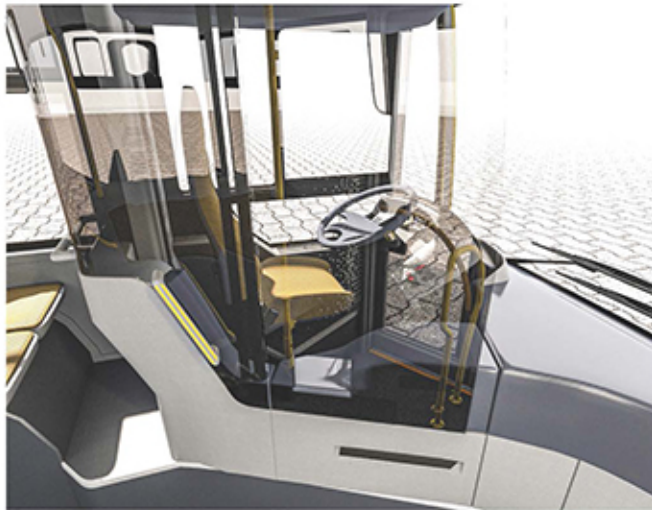
#### Colors

- Unlimited

#### Configurations

- Sheet width: from 24 to 112 in. (from 610 to 2,845 mm)
- Gauges: from 0.030 to 0.400 in. (from 0.762 to 10.16 mm)

SIMONA offers products and engineered solutions that provide the regulatory compliance, design flexibility, formability or weatherability required for each specified mass transit application.



#### OneStep® Vinyl/ABS

##### Leather-like Soft Touch Material for Thermoformed Dash and Steering Panel Components

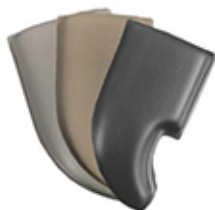
This unique, thermoformable sheet is laminated over ABS to create a piece that mimics typical hand-wrapped parts. This innovative material can drastically decrease your production time and labor by eliminating the step of hand-wrapping vinyl over a thermoformed part. It has a sophisticated look and feel while also providing durability and long lasting protection.

##### Advantages

- Acts like a high performance leather
- UV and weather resistant
- Eliminates step of hand-wrapping vinyl
- Scratch and mar resistant
- Cost effective

##### Colors

- Tan, Prairie Tan
- Med. Neutral, Bone, White
- Graphite, Charcoal
- Slate Gray, Blue Gray, Med. Gray
- Black (FX), Black (MC)
- Dark Portland
- Med. Dark Pewter
- Mocha



#### SIMORAIL

##### Flame-retardant Thermoplastic Sheet for Railway Interiors, Meeting EN 45545 and NFPA 130

The SIMORAIL product family unlocks new possibilities when it comes to the interior finishing of passenger trains. The products combine the benefits of simple handling and superior thermoforming properties with the merits of multiple design options that will transform any rail car into a genuine eye-catcher. Specially developed to meet the requirements set out in EN 45545, our low-flammability SIMORAIL sheets also offer superior safety when it comes to fire protection.

##### Advantages

- Weighs less than metals and glass-reinforced plastics
- Meets stringent regulatory requirements up to sheet thickness of 6 mm
- Recyclable
- Broad range of aesthetic options
- Can be used for variety of interior components

##### Colors

- Unlimited

##### Configurations

- Sheet width: up to 78.74 in. (up to 2,000 mm)
- Gauges:

**SIMORAIL HL2** from 0.039 to 0.118 in. (from 1 to 3 mm)

**SIMORAIL HL3** from 0.098 to 0.236 in. (from 2.5 to 6 mm)



# SIMONA

## Global Thermoplastic Solutions

These lightweight and recyclable thermoplastics can be customized in a wide range of flexible design options from unlimited colors, metallics, textures, translucents and decorative prints.



### Interior Uses

- ① Seat backs
- ② Air source and ventilation covers
- ③ Screen bezels
- ④ Wall panels
- ⑤ Driver partitions
- ⑥ Steering dashes

### Exterior Uses

- ① Fuel source panels
- ② Mirror housings
- ③ Grill covers
- ④ Bumper and fascias
- ⑤ Wheel flares
- ⑥ Storage doors

---

### SIMONA Boltaron

1 General Street  
Newcomerstown, OH 43832  
USA  
Phone +1 800 342 7444  
Fax +1 740 498 5448  
info-boltaron@simona-group.com  
www.simona-boltaron.com

### SIMONA PMC

2040 Industrial Drive  
Findlay, OH 45840  
USA  
Phone +1 877 289 7626  
Fax +1 419 425 0501  
leads-pmc@simona-group.com  
www.simona-pmc.com

### SIMONA AG

Teichweg 16  
55606 Kirn  
Germany  
Phone: +49 (0) 67 52 14-0  
Fax: +49 (0) 67 52 14-211  
mail@simona-group.com  
www.simona.de